

Combining local experience and highest standards on our customers' issues





■ ■ ■ INTRODUCTION

LCM is a specialised Africa & Middle East contractor to the Energy industry.

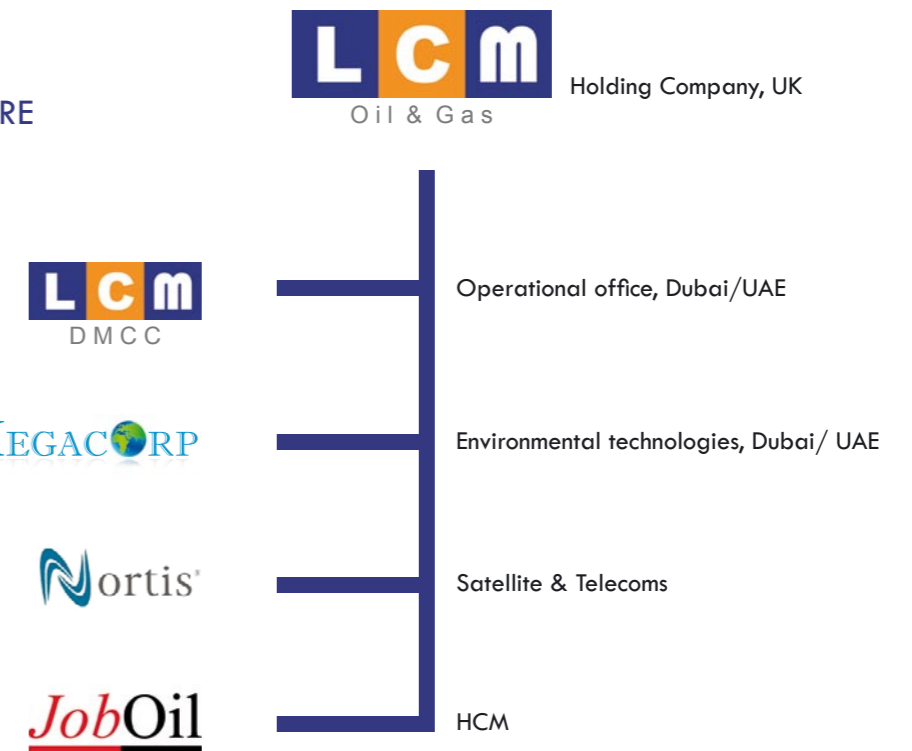
The company's corporate office is situated in London (UK) giving it the opportunity to provide the highest standards in administration, communication, safety, logistics and legal issues.

Its operational office is located in Dubai (UAE) where the core of the business is centralized around an experienced team.



Operational since 1991, LCM has grown to over 350 professionals covering over 20 nationalities working for our clients within exploration, operation and maintenance, engineering, power and HSEQ as well as recently added security advice and support.

■ ■ ■ GROUP STRUCTURE



■ ■ ■ LIST OF CLIENTS

We are proud to be working for major Oil & Gas exploration and production companies as well as service and construction companies worldwide.

-  REPSOL OIL OPERATIONS
-  VEBA OIL OPERATIONS (Suncor)
-  WAHA OIL COMPANY (Marathon/ Conoco/ Amerada)
-  WINTERSHALL LIBYA (BASF Group)
-  ZUEITINA OIL COMPANY (Oxy)
-  ENI
-  TOTAL FINA ELF
-  BREGA MARKETING
-  SCHLUMBERGER
-  AGOCO
-  OCCIDENTAL PETROLEUM
-  BRITISH PETROLEUM
-  CHEVRON
-  OMV
-  TEIKOKU
-  PERTAMINA



■ ■ ■ EXPLORATION

LCM has a proven track record for the provision of technical support to onshore and offshore exploration campaigns. Seismic acquisition and exploration drilling require a number of disciplines that LCM will make available to the client to include

- Logistics Support
- Supply Chain
- Quality Assurance and Control
- Geoscience
- Environmental
- Drilling Support
- Civil
- Wellsite Geology

■ ■ ■ HSEQ

LCM was founded and is committed every day to the highest safety and quality standards.

Whether HSE Management System Design, Implementation, Survey, Inspection or Site Health & Safety Management, LCM employs a number of HSE professionals with a wealth of experience in the energy sector as well as the construction and the exploration sectors.



ENGINEERING & PROJECTS

As well as serving the Oil & Gas companies, we have provided support to the major EPC contractors involved in Energy Production Development projects over the years. Our database gives us access to a large number of multi-discipline professionals at all levels of a project.



OPERATIONS & MAINTENANCE

LCM has supplied full operation and maintenance teams for offshore production facilities and remote onshore production plants. Depending on the client's requirements, LCM can provide full crews at a client's disposal or integrated O&M systems rewarded on performance with a management system tailor-made to a client's requirements. LCM's target are the small remote production facilities.

LCM's O&M strength resides in its management's knowledge of the production facilities as well as the availability of a number of specialized disciplines within its portfolio of specialists & engineers.



POWER & DISTRIBUTION

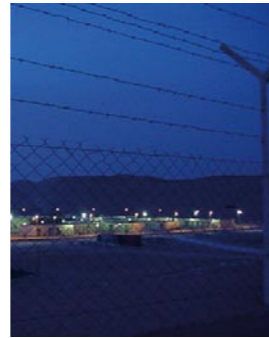
LCM's High Line division is a technical and co-operative department with working crews composed by senior technical personnel and highly skilled technicians & line men, trained and certified for energized works according to international standards with maximum Quality & Safety performance levels.

- Overhead Power Lines, HV, MV & LV Electric auxiliaries installation, Maintenance & Troubleshooting
- Live Line Insulator Washing
- Live Line Maintenance developing Rubber Gloves (up to 45kV) & distance (up to 400kV) & bare-hand (up to 400kV) techniques
- Thermal Imaging
- Switchgears & Transformers Maintenance
- Cable Terminations

SECURITY

With the uncertainty of an unstable Middle East and North African region and increasing insecurity for foreign companies or individuals and their assets, it is imperative that corporations working in these high risk areas have adequate risk protection in the form of an Operations Liaison Co-ordinator (OLC) attached to the company at their various sites.

In various situations in hostile countries the OLC role has been an extremely important asset to any company during any civil unrest/ political riots etc., by maintaining safety to the client's employees, and by taking control of the Emergency Response Team while assisting senior management in assuring that stability of the work place is secure and all other satellite sites and compounds have been shut down accordingly.



DTS Services, partnered with LCM Oil & Gas, have trained British Ex-Military consultants that can fulfil the OLC position, having vast experience of this role to provide clients with co-ordinators to manage the protection of their employees, sites and offices, to liaise with local law enforcement agencies and act as a buffer zone between them and the contractors.

Set written procedures to combat any security threat to the client's employees and assets can be part of any HSE department in any company.

LETTER FROM THE MANAGEMENT



LCM's client has always been the centre of our attention. More than a strategy - it is a fundamental value that contributed to our success. Today, our clients are part of a common history and we consider them the fathers of LCM's success.

LCM, which recently celebrated its 12th anniversary in the oil sector, was founded on the basis of these values:

LEADERSHIP: First of all, our client's leadership - that we help to maintain by a contribution of strong added value and teams of professionals. Secondly, the leadership of LCM - we always aim to prove that we can be the leader in the market we targeted.

CLIENT: The understanding of our client's needs is of the essence. Our broad knowledge of the industry lets us create perfect, tailor-made solutions for each and every demand.

MANAGEMENT: A modern approach adapted to a unique environment, our management is based on transparency, commitment and respect. Nothing can be done by just one man.

Our vision today is summarised in a few words: Assist our partners' success by delivering concrete and fast results. Today, new challenges are presented to the men and women of LCM - challenges that we face each day with passion, rigour and ethics.



L C m